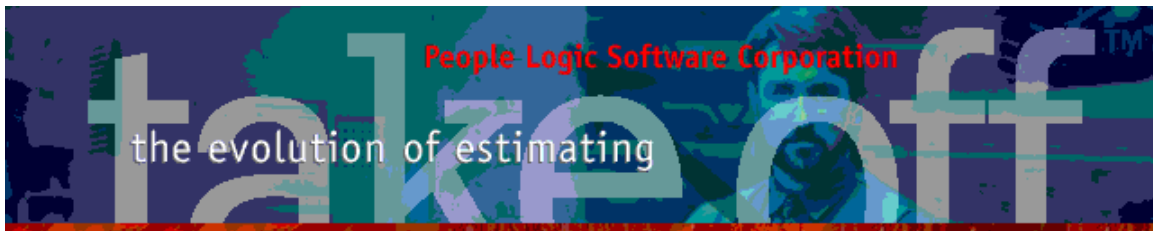


Update Bulletin 2.9.0.0

Hello

Many updates of the past year have been requested by various users and have finally made their way to your runtime version. Brief summaries of the highlights are shown below.

Graphics	2
Import	2
Drag/Drop file.....	2
Drag/Drop image	3
Edit/Paste	4
Admin.....	5
Material	5
Spec	5
Weight	6
Contact	7
Client	8
COC.....	8
Logo.....	8
Merge Documents	8
Templates	9
Login	11
Preferences	11
Takeoff.....	12
Item editor	12
Grids.....	13
plExport.....	14
tkOffice.....	14



Graphics

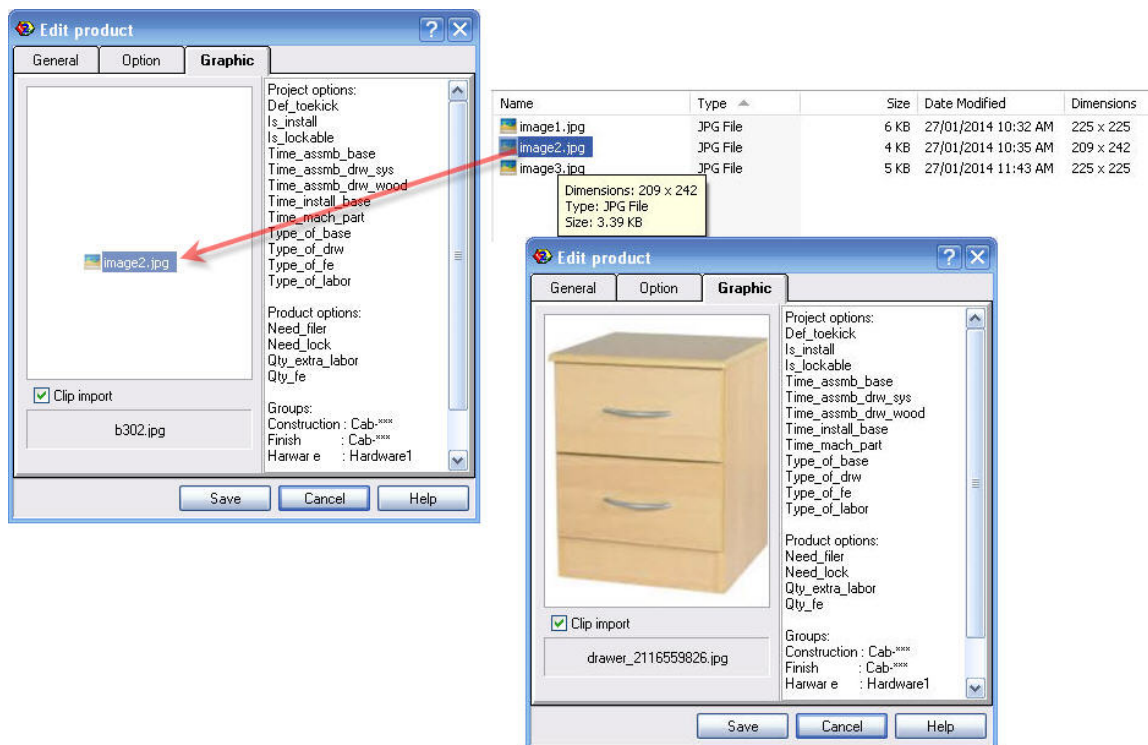
Import

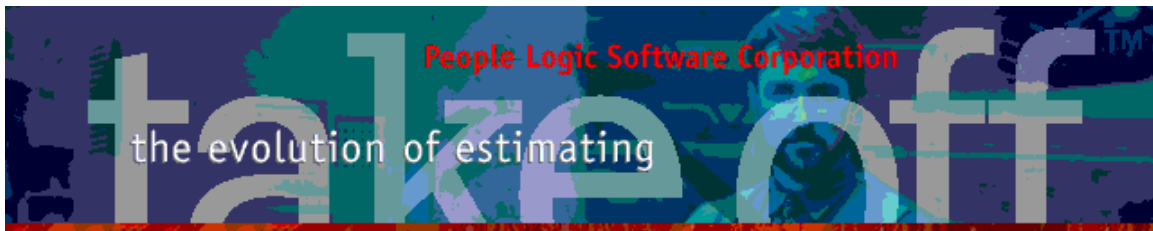
Image capability has been added to both Client logos and Materials. Along with that the ability to select images has been improved from simple files selection to drag/drop and paste directly to image zones. Not only will the images be selected but they will automatically be cropped and resized to fit their target images.

Drag/Drop file

Drag files directly from File Explorer and drop them on the image zone within the item editor.

Clip import: If this is checked then the image will be clipped either on sides or top/bottom to fit the shape of the image rectangle. This will ensure the whole rectangle is filled. Thereafter resizing is done automatically.





Drag/Drop image

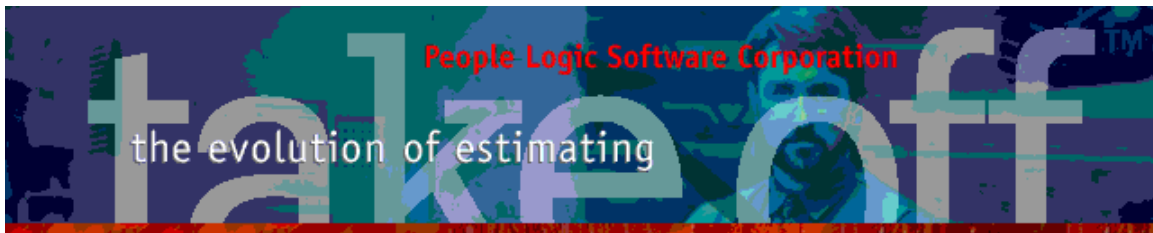
Drag/Drop images directly from websites to item image zones. If the target is an icon then the image will be clipped square prior to resizing.

NOTE – Web links can not be dropped, only files. Image search by Google^(TM)
Image search may first require clicking on an image to locate its file.

The screenshot displays the software interface for estimating. The 'Edit product' window on the left shows details for item B302, including its name, export status, and dimensions (Length: 18, Height: 36, Depth: 24). A red arrow points from the 'Graphic' tab to a gallery of cabinet images. The 'Add Item from CabinetDrawer' window on the right shows the item B302 with its base cost, labor, material, and total cost (\$134.49). It also displays the item's location (Office 2 @ 2nd Floor) and dimensions.

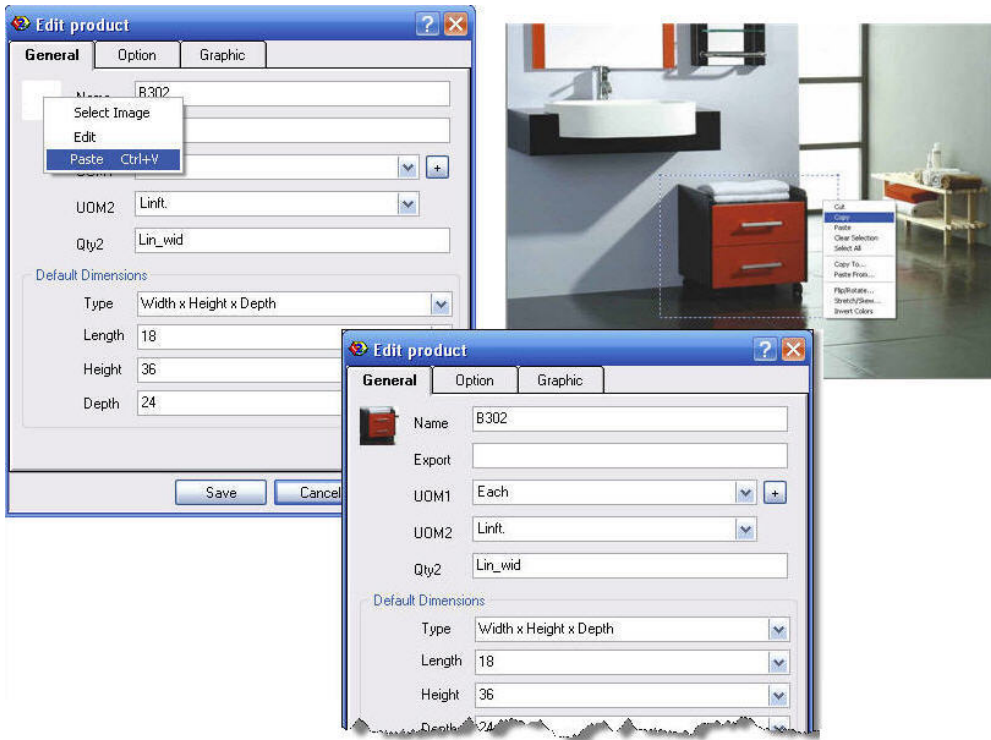
Base Cost	Labor	Material	Cost
\$68.57	\$65.92		\$134.49
Extra	\$0.00	\$0.00	\$0.00
			\$134.49

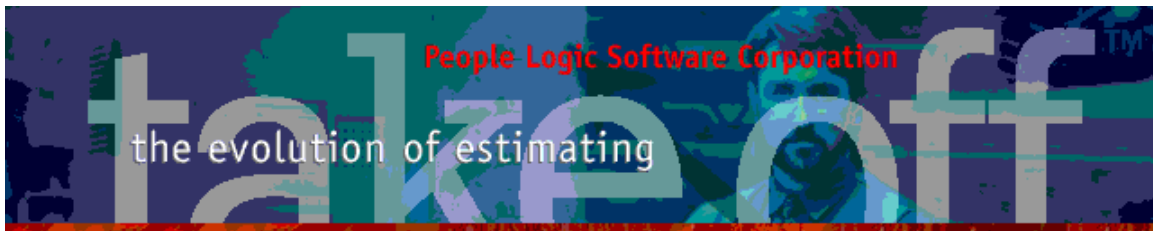
General	Options	Costs	Sell	Tracker
Item	B302			
Location	Office 2 @ 2nd Floor			
Qty (Each)	1			
Qty2 (Linit.)	1.50			
Weight	43.85			
Length	18			
Height	36			
Depth	24			



Edit/Paste

Images may originate from your Windows clipboard such as when working in an image editor. Simply select a region in the editor and click *Copy*. From within takeoff, right click *Paste*. Similar resizing will occur during *Paste*.





Admin

Material

Materials have the added field Weight plus two image fields. To accommodate the images a new TAB "Spec" was introduced and Supplier info was moved to that page. Material grid also shows weight.

Spec

Two images may be placed per material. Often several views are needed or additional hardware items are used.

Blum 125 deg clip on

Material: \$2.25/Each [\$2.25/Each]
Labor : \$0.00/Each [\$0.00/Each]

Material Composites Labor **Spec**

Clip import ☒

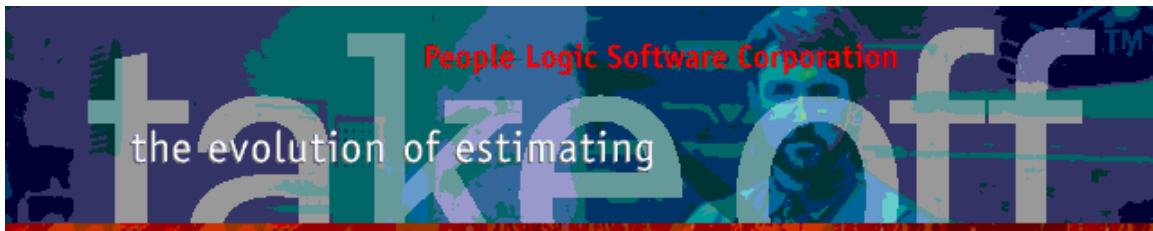
Supplier Hemsely Distributors

Hemsely Distributors
Attn
569 James Boulevard
Vancouver, BC V7T 8H4
Canada
ph 250-729-1278
fx 250-729-7786
wb
coc

Save Cancel Help

Automatically saved to:

{dataPath}\Projects\{myProject}\Graphics\Materials\



Weight

A weight property has been attached per UOM of each material. This allows total Product/Phase/Project weight to be calculated as a sum of all materials.

Composite weight is automatically calculated similar to costs as a sum of all their composite weights. The actual unit of weight is arbitrary but must be consistent throughout.

Edit Material

Blum 125 deg clip on Material: \$2.25/Each [\$2.25/Each]
Labor : \$0.00/Each [\$0.00/Each]

Material Composites Labor Spec

Material: Blum 125 deg clip on

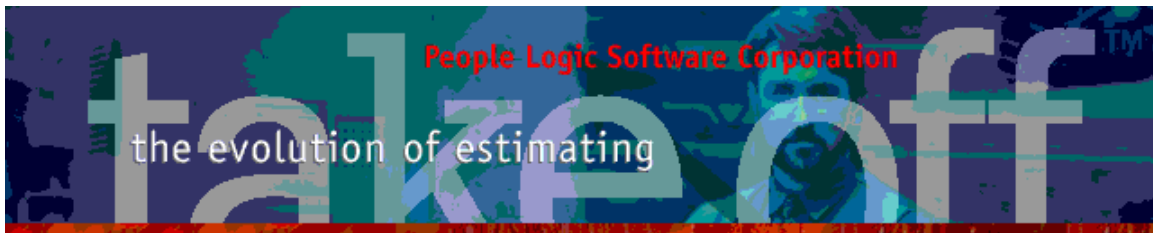
UOM: Each

Cost: ☐ As Composite

\$2.25 Last updated: January 27, 2014 @ 03:45 PM 0%

Weight: 0.6 per Each

Waste: 0 %



Contact

For the first time the Contact manager has been reworked. Visually, dropdown lists have been replaced with lists. Selection is much easier for long client/contact lists. Simple merge documents have been introduced using a template editor along with an image for client logos.

Architects | Associations | General Contract | Installers | Professionals | Sub Contract | Suppliers | Trade Contract

Quick ADD buttons

Add ClientTypeTab | Add Client | Add Contact | Add Note | Add Document


Client list

Interior Space Planners Inc.
Richard Stack Inc.
Tall Structures

Client - Tall Structures

Attn: Mr Jerry Talbot
756 Hastings St
Vancouver, BC Canada, V8T 5F7
Phone: 604-379-1257
Fax: 604-379-8933
Web: www.tallstructures.com
COC: C01-000-111-22
NEW COC

NEW Logo



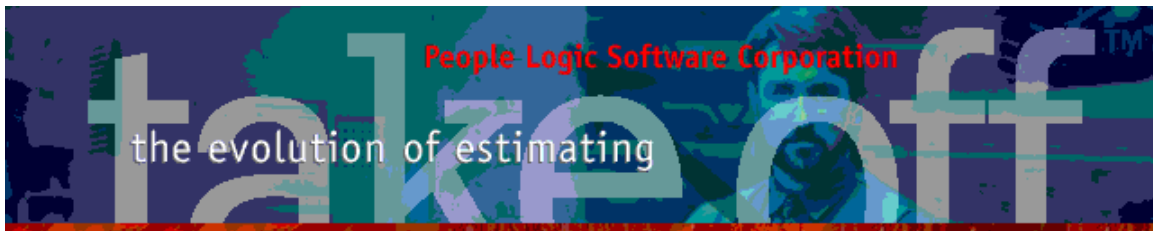
Contact list per Client

Contacts

Type	Number	Extension
Cell Phone	123-246-2222	
Email	jt@here.com	

NEW Template editor

Contacts | Notes | Templates



Client

COC

New field **ChainOfCustody** number was added for FSC suppliers.

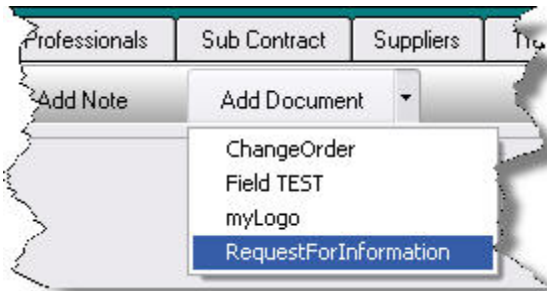
Logo

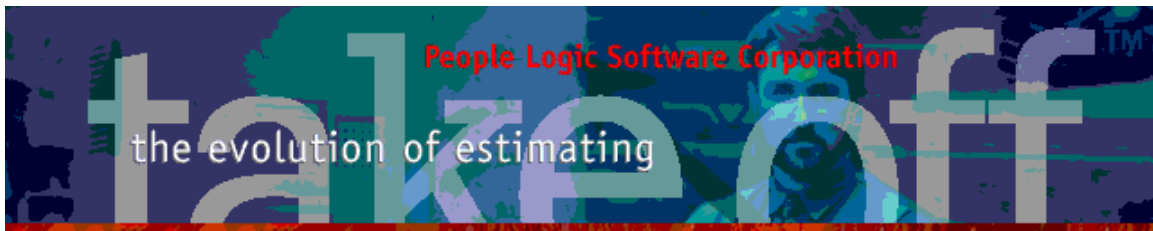
Use Drag/Drop/Paste to add logo.

Automatically saved to:
 {dataPath}\Projects\{myProject}\Graphics\Logos\

Merge Documents

Select a client and then the merge document from the *Add Document* button. The selection list corresponds to the previously created templates. The resulting merged document is added to your Notes list and available for further editing.





Date	User	Subject
27/01/2014 2:53:54 PM	Fred	RequestForInformation

REQUEST FOR INFORMATION

DATE: Jan 27, 2014

FROM: my Cabinet Systems

TO: Tall Structures

ATTENTION: Mr Jerry Talbot

REFERENCE: Starlight Jewellers

Templates

In order to create a Merge Document one must first create a Merge Template. A Template is simply a document composed of free form text along with special merge fields. Rather than hard typing names and other Client specific information into your template, Merge Fields are used instead. They will become placeholders once the Client is known.

Add Template
ChangeOrder
Field TEST
myLogo
RequestForInformation

List of Templates
(these will later show in the "Add Document" menu)

Double click to Edit

REQUEST FOR INFORMATION

DATE: <<DATE>>

FROM: my Cabinet Systems

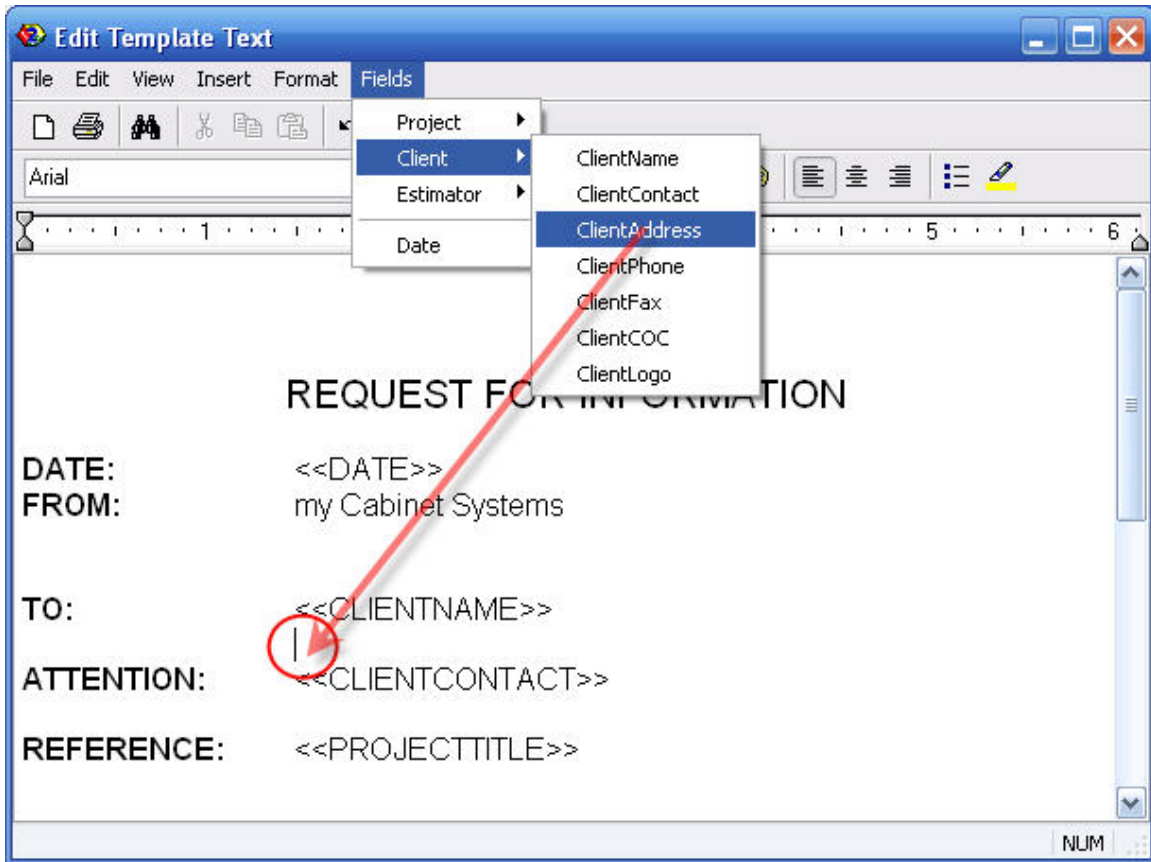
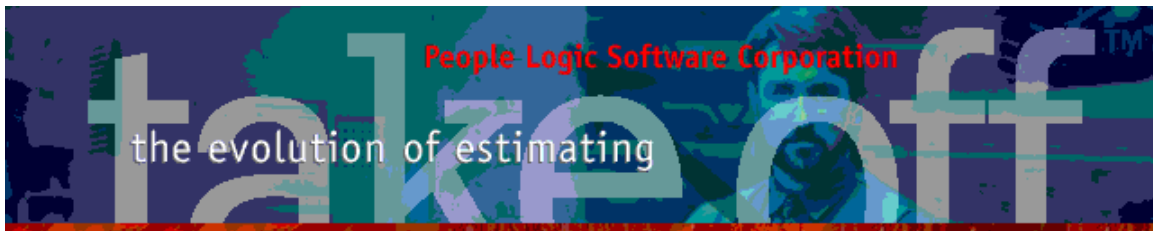
TO: <<CLIENTNAME>>

ATTENTION: <<CLIENTCONTACT>>

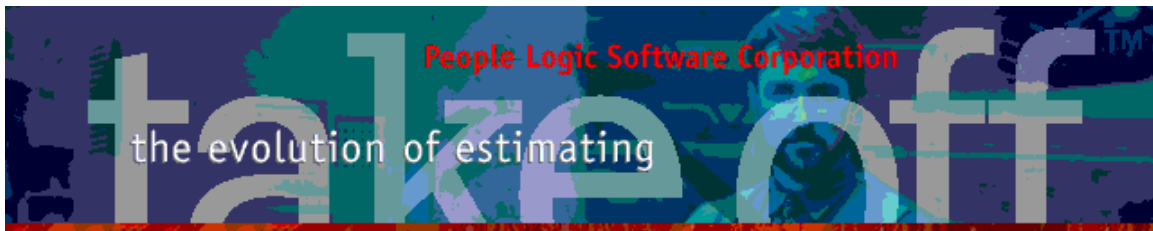
Contacts Notes Templates

Before Clicking a fieldname ensure that your cursor is position correctly. After insertion formatting tools may be used.

NOTE – Do not remove the "<< >>" symbols else merge will fail.



Automatically saved to:
{dataPath}\Templates



Login

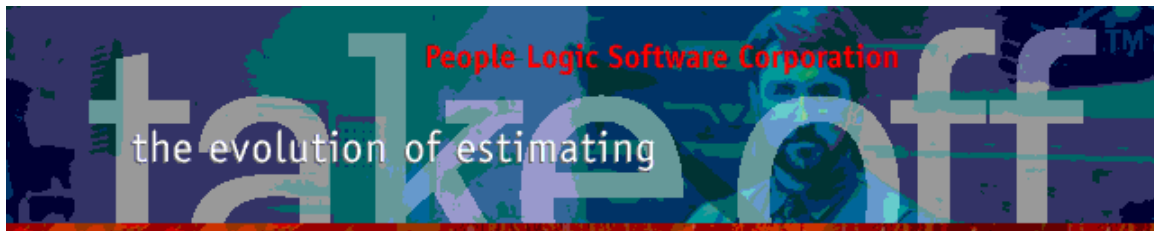
Three new fields were added to the Login/ChangeUser form and accessible by the +/- button. These fields are used as merge fields by both Client Templates and tkOffice Proposals.

A screenshot of the 'Change User' dialog box. The title bar is blue with a close button (X) on the right. The main area is light gray. At the top, it says 'Please Enter your User Name'. Below this is a text input field containing 'Fred' and a small blue button with a minus sign. Underneath are four more text input fields labeled 'Name', 'Title', 'Mobile', and 'Email'. The 'Name' field contains 'Fred', 'Title' contains 'Super tech', 'Mobile' contains '007', and 'Email' contains 'here@there'. At the bottom are three buttons: 'OK', 'Cancel', and 'Help'.

Preferences

Alternating grid colors may be disabled.

A screenshot of the 'Preferences' dialog box, specifically the 'Basic' tab. The title bar is blue with a close button (X) on the right. Below the title bar are four tabs: 'Basic', 'Advanced', 'Captions', and 'License Key'. The 'Basic' tab is selected. The main area is light gray. Under the heading 'User Settings', there are several checkboxes: 'Reload Last Project on Startup' (unchecked), 'Show Tip of Day at Startup' (unchecked), 'Disable Startup Video Clip' (checked), 'Disable Alternating grid color' (unchecked and highlighted with a yellow background), 'Save Form Positions' (checked), 'Enable Auto Backup Every' (unchecked), and 'Enable play viewer' (unchecked). To the right of these checkboxes is a numeric spinner control set to '0.5' with the label 'Hours' above it.



Takeoff

Item editor

Weight of all materials per takeoff line items shown.

B302
Qty = 2
Size = 30 x 30 x 18
Spec = Cab-Birch / Cab-Birch / Default(H)
Tags = Phase 1 / Original / PhaseNew 1 / RevisionTWO

	Labor	Material	Cost
Base Cost	\$147.82	\$289.94	\$437.77
Extra	\$0.00	\$0.00	\$0.00
			\$437.77

Sell: \$772.66

GeneralOptionsCostsSellTracker

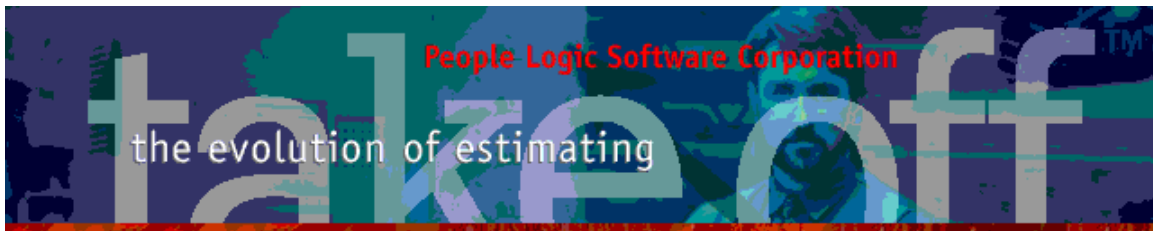
Item: B302
Location: Office 2 @ 2nd Floor
Qty (Each):
Qty2 (Linft.):
Weight:

GeneralOptionsCostsSellTracker

☒ Material [\$289.94]
☐ Labor [\$147.82 (5.4+1.0)]
☐ Extra [\$0.00]

InteriorCab-Birch
FinishCab-Birch
HardwareDefault(H)

Library	Net Qua...	UOM	Description	Cost	Weight
Edging	57.00	Linft.	15/16 x .018 PVC Birch	\$6.84	0.00
	28.00	Linft.	15/16 x 1/8 PVC Birch	\$11.76	2.80
Hardware	48.00	Each	8mm Beech Dowell	\$0.48	0.00
	4.00	Pair	Blum bs230 20	\$12.00	8.00
	4.00	Each	Chrome 4 inch wire D pull	\$2.40	0.40
	4.00	Each	Kenstin cabinet lock	\$100.00	6.00
Sheet Goods	24.00	Sqft.	1/2 Baltic beech	\$43.76	0.00
	25.00	Sqft.	1/2 Birch G1S	\$41.18	30.00
	25.83	Sqft.	3/4 Birch G1S	\$47.11	49.08
	10.00	Sqft.	3/4 Birch G2S (Door grade)	\$20.59	19.00
	5.00	Sqft.	3/4 Sheathing	\$3.82	9.50



Grids

New columns:

LocationParent – Parent and current location shown as a single column. Useful for “GroupBy” when showing multiple rooms.

Weight – Weight of item.

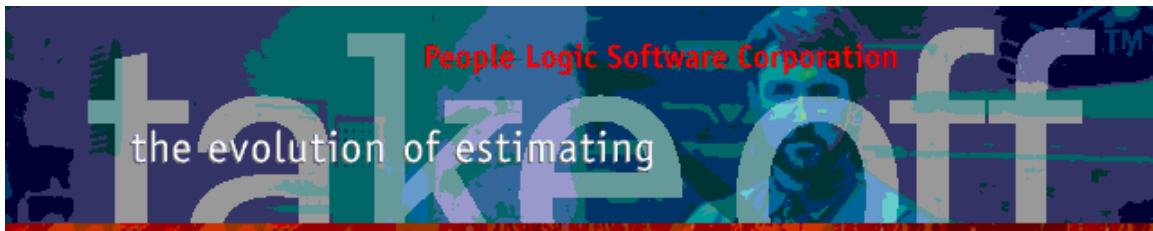
LocationParent	Location	ID	Qty	Units	Product	Library	Length	Height	Depth	Weight	Interior	Finish	Hardware	Co
2nd Floor\ Office 1	Office 1	7	1	Each	T110	Counter	30	0	74	42.65	Default(C)	Default(H)	Default(H)	
2nd Floor\ Office 1	Office 1	8	100	Linft.	Crown	Finish Carpentry				120.00	Default(C)	Default(H)	Default(H)	
2nd Floor\ Office 2	Office 2	9	2	Each	B303	Cabinet	18	30	24	160.90	Cab-Birch	Default(H)	Default(H)	
2nd Floor\ Office 2	Office 2	10	1	Each	B302	Cabinet	30	30	18	69.49	Cab-Birch	Default(H)	Default(H)	
2nd Floor\ Office 2	Office 2	11	2	Each	B302	Cabinet	30	30	18	124.78	Cab-Birch	Default(H)	Default(H)	
2nd Floor\ Office 2	Office 2	12	1	Each	B302	Cabinet	30	30	18	69.49	Cab-Birch	Default(H)	Default(H)	
2nd Floor\ Office 2	Office 2	13	1	Each	False front	Cabinet	24	72		24.40	Cab-Birch	Default(H)	Default(H)	Mo
2nd Floor\ Office 2	Office 2	14	1	Each	T110	Counter	30	0	74	42.65	Default(C)	Default(H)	Default(H)	
2nd Floor\ Office 2	Office 2	15	100	Linft.	Crown	Finish Carpentry				120.00	Default(C)	Default(H)	Default(H)	
2nd Floor\ Reception	Reception	16	1	Each	Wall 1	Millwork	120	42	6	48.93	Default(C)	Default(H)	Default(H)	
2nd Floor\ Reception	Reception	17	2	Each	B302	Cabinet	18	42	24	180.00	Cab-Birch	Default(H)	Default(H)	
2nd Floor\ Reception	Reception	18	1	Each	C822	Counter	122	12	32	119.30	Default(C)	Default(H)	Default(H)	
2nd Floor\ Reception	Reception	19	1	Each	Chair	Millwork				0.00	Default(C)	Default(H)	Default(H)	

Weight of all materials by area and material type.

Takeoff	Material	Labor	Summary	Cost	Weight	Buyout
Starlight Jewellers						
1st Floor						
2nd Floor						
	Hardware	16.00 Each	Blum 125 deg clip on	\$36.00	9.60	
		4.00 Each	Blum Meta filer	\$32.00	0.00	
		34.00 Pair	Blum bs230 20	\$102.00	68.00	
		16.00 Each	Blum mounting plate clip on	\$9.60	0.00	
		42.00 Each	Chrome 4 inch wire D pull	\$25.20	4.20	
		32.00 Each	Kenstin cabinet lock	\$800.00	48.00	
		20.00 Each	Plastic shelf clips	\$0.60	0.00	
		2.00 Each	Wire grommet 2-1/2	\$5.00	0.00	
	Lumber	39.00 Linft.	Jamb 2x4 birch	\$126.75	0.00	
	Mouldings	39.00 Linft.	Casing birch	\$29.25	0.00	
		900.00 Linft.	Crown 1x4 birch	\$1,350.00	1080.00	
	Sheet Goods	12.00 Sqft.	1-0 Wht Melamine G25	\$16.24	0.00	
		169.50 Sqft.	1/2 Baltic beech	\$309.09	0.00	
		169.00 Sqft.	1/2 Birch G15	\$278.35	202.80	
		36.46 Sqft.	1/2 Wht Melamine G15	\$42.07	0.00	
		219.33 Sqft.	3/4 Birch G15	\$399.96	416.73	
		85.00 Sqft.	3/4 Birch G25 (Door grade)	\$175.00	161.50	
		168.42 Sqft.	3/4 Sheathing	\$128.79	319.99	
		95.22 Sqft.	3/4 Wht Melamine G15	\$89.62	219.01	
	Weight = 2,611.50 [2,611.50 Mfg + 0.00 Buyout]			Explosive Composites Convert to UOM2		
	Cost = \$5,458.78 [\$4,458.78 Mfg + \$1,000.00 Buyout]					

Weight by area by product type.

Takeoff	Material	Labor	Summary	Weight
Starlight Jewellers				
1st Floor				
2nd Floor				
	1.00 Each	B224	\$94.10	\$85.67 62.92
	1.00 Each	B244	\$77.34	\$52.92 56.98
	10.00 Each	B302	\$1,564.80	\$762.46 707.53
	4.00 Each	B303	\$704.54	\$374.68 321.80
	1.00 Each	C822	\$143.18	\$122.02 119.30
	4.00 Each	Chairs	\$1,000.00	\$0.00 0.00
	900.00 Linft.	Crown	\$1,350.00	\$3,600.00 1080.00
	2.00 Each	False front	\$62.85	\$6.85 48.80
	2.00 Each	Filler base	\$4.55	\$15.50 3.80
	2.00 Each	Filler wall	\$3.87	\$20.63 1.90
	2.00 Each	Frame 4 inch	\$156.00	\$115.00 0.00
	2.00 Each	T110	\$99.61	\$69.82 85.30
	1.00 Each	T115	\$50.06	\$77.77 50.65
	2.00 Each	W210	\$124.00	\$84.06 23.60
	1.00 Each	Wall 1	\$23.89	\$153.32 48.93
	Material Cost = \$5,458.78			Convert to UOM2
	Labor Cost = \$5,540.71			
	Total Cost = \$10,999.49			Weight = 2,611.50



plExport

- Weight added to all material or item summaries.
- Filenames include query name from selection.
- Last export flavor remembered.

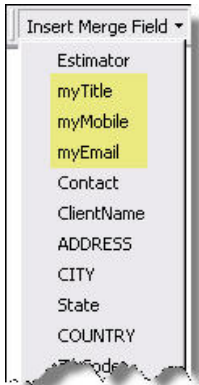
tkOffice

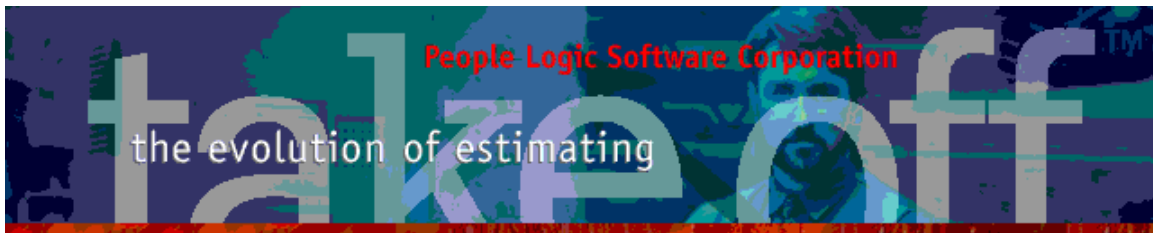
Optional tax to Profit, GC, SubContracts and Allowances

Print	Cost	% Markup/Rate	Amount	Total	Margin	Tax
Mfg Material	\$4,458.78	10%	\$445.88	\$4,904.66	22.2 %	<input checked="" type="checkbox"/>
Buyout Material	\$1,000.00	20 %	\$200.00	\$1,200.00	5.4 %	<input checked="" type="checkbox"/>
Mfg Labor	\$1,290.37	30 %	\$387.11	\$1,677.49	7.6 %	<input checked="" type="checkbox"/>
Site Labor	\$4,250.33	40 %	\$1,700.13	\$5,950.47	27.0 %	<input checked="" type="checkbox"/>
SUB TOTAL Costs				\$13,732.62	[62.2 %]	
Profit	[\$13,732.62]	50 %		\$6,866.31	31.1 %	<input checked="" type="checkbox"/>
Gen Conditions <input checked="" type="checkbox"/>	[\$0.00]	100 %		\$0.00	-	<input checked="" type="checkbox"/>
Sub Contracts <input checked="" type="checkbox"/>	\$450.00	60 %	\$270.00	\$720.00	3.3 %	<input checked="" type="checkbox"/>
Allowances <input checked="" type="checkbox"/>	\$750.00			\$750.00	3.4 %	<input checked="" type="checkbox"/>
Subtotal				\$22,068.92	[100 %]	
TAX <input checked="" type="checkbox"/>	[\$22,068.92]	-		\$0.00		
TOTAL				\$22,068.92		

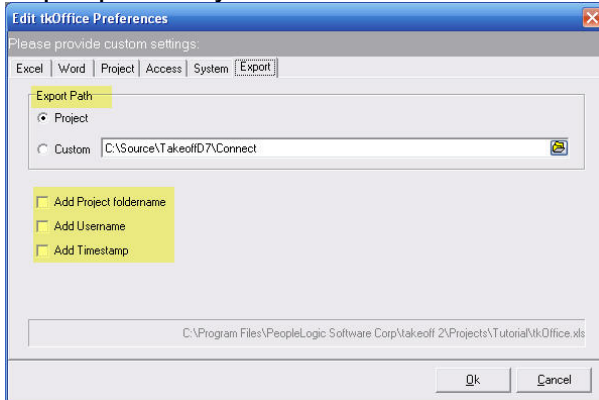
C:\Program Files\PeopleLogic Software Corp\Takeoff 2\Projects\Tutorial Monday, January 27, 2014

Three new Proposal merge fields added.





Exportpath may be redirected and renamed.



Any comments are welcome for future enhancements.
Thank you for all your ideas.

People Logic Software

