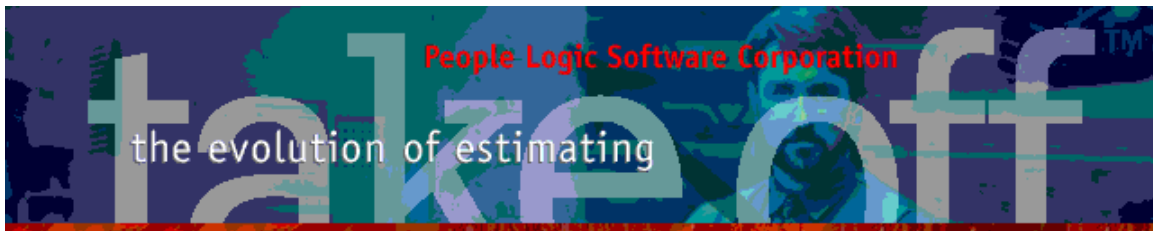


Update Bulletin 2.8.2.0

Hello

Many updates of the past year have been requested by various users and have finally made their way to your runtime version. Brief summaries of the highlights are shown below.

Admin.....	2
Group Defaults	2
Catalog	3
Sub Items	3
Menu	3
Edit Preferences	3
Edit Project	4
File NewProject	4
PlanRoom	4
Drag/Drop	4
Help files	4
PlanViewer.....	5
Legend	5
Save Line properties	5
Takeoff	6
Edit Item	6
Filter	6
Explode Composites	7



Admin

Group Defaults

Specific Product libraries may need defaults different than the universal Project one. These may be set by double clicking on the library row below.

*Products now added form the **Cabinet** library will have different Construction/ Finish defaults than other products.*

Option	Material	Labor	Spec-Groups	Cost	UOM	Path
Starlight Jewellers						
Cabinet						
Carcass (C)	Back	1/2 Wht Melamine G1S		\$0.75	Sqft.	Sheet Goods\Melamine
Drawer box (C)	Carcass G1S	3/4 Wht Melamine G1S		\$0.80	Sqft.	Sheet Goods\Melamine
Finish panel (F)	Edging case	15/16 x .018 PVC White		\$0.05	Linft.	Edging\PVC
Hdw1 (H)	Edging lip	3/4 x1-1/2mm Solid Birch		\$0.85	Linft.	Edging\Wood
	Edging wale	1-5/16 x .018 PVC White		\$0.12	Linft.	Edging\PVC

<div> <div>Cab-Birch / Cab-Plam / Cab-WhtMel / Default(C)</div> <div>Interior / Finish / Hardware</div> </div>			
Product Spec Defaults			
Cabinet	Interior	Finish	Hardware
	Cab-Birch	Cab-Plam1	[Default(H)]
Counter	[Default(C)]	[Default(F)]	[Default(H)]
Finish Carpentry	[Default(C)]	[Default(F)]	[Default(H)]
Millwork	[Default(C)]	[Default(F)]	[Default(H)]

Set Default Groups

Product Library: Cabinet

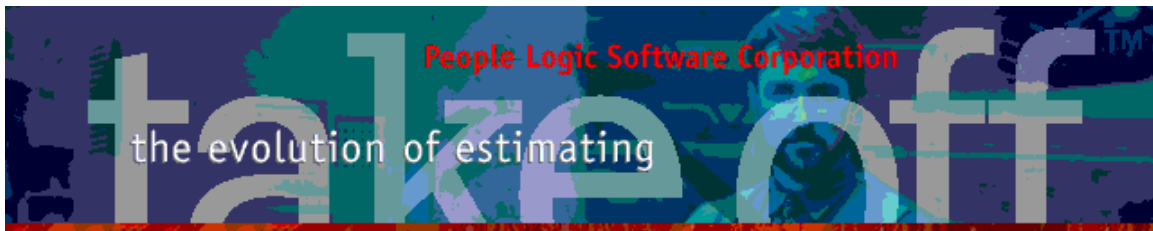
Interior	Finish	Hardware
Cab-Birch	Cab-Plam1	[Default(H)]

Ok

ClearAll

Cancel

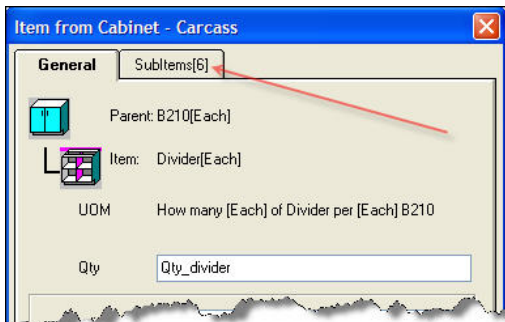
Help



Catalog

Sub Items

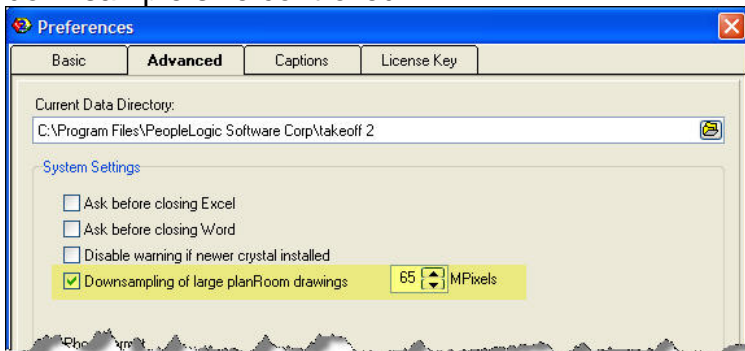
If a catalog grid item has sub items then they will be shown counted on the tab label. Those without items will have their tab disabled.

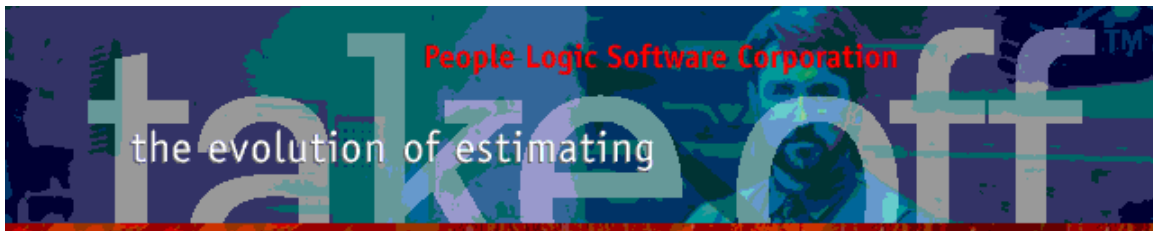


Menu

Edit/Preferences

PlanRoom drawings which are of high density may be left unchanged or their downsample size controlled.





Edit/Project

Mass updating of labor rates has been clarified. Edit box will now remember last applied value.

Last Labor rate reset

Manufacture Current average = \$20.00

Site Current average = \$40.00

Shows last updated value Average of all labor items(if some are different)

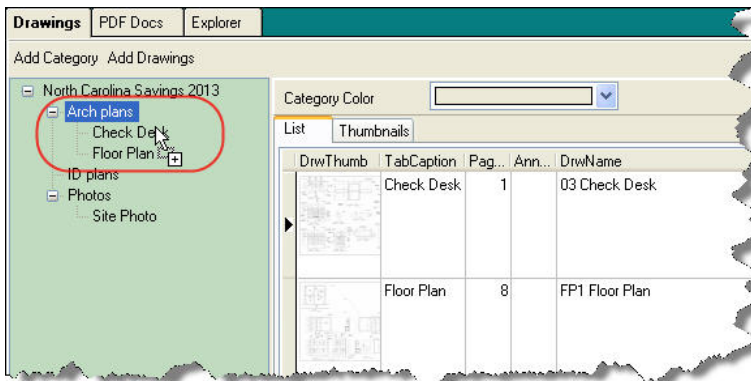
File/NewProject

Default project to copy from will be set to last File|New selection. Thus the most likely selection would be the Master template always used.

PlanRoom

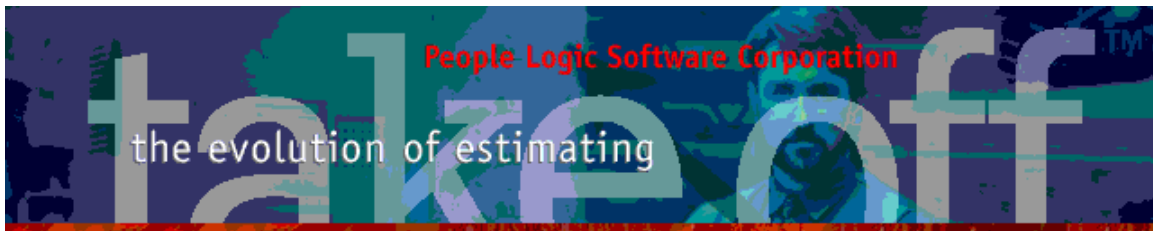
Drag/Drop

Image files may be drag/dropped from File explorer into a planRoom category without using *AddDrawing*.



Help files

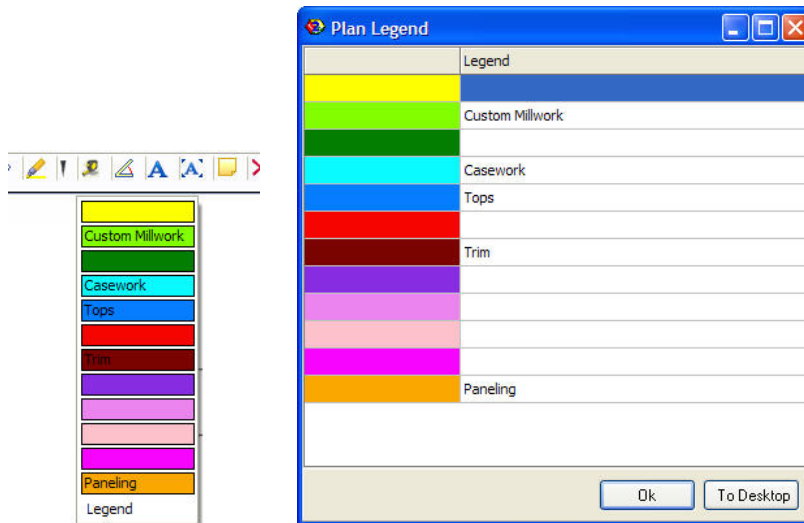
Added to both F1 context help and Help|PDF.



PlanViewer

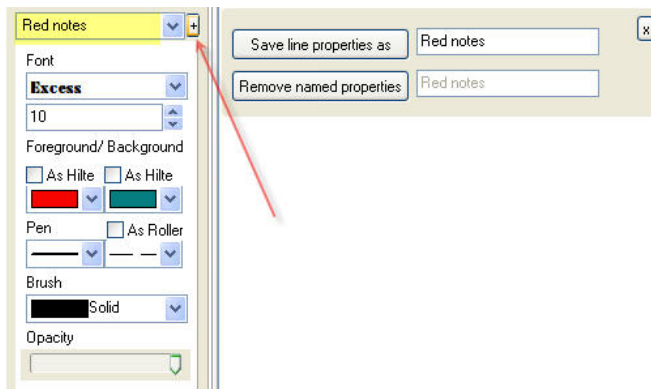
Legend

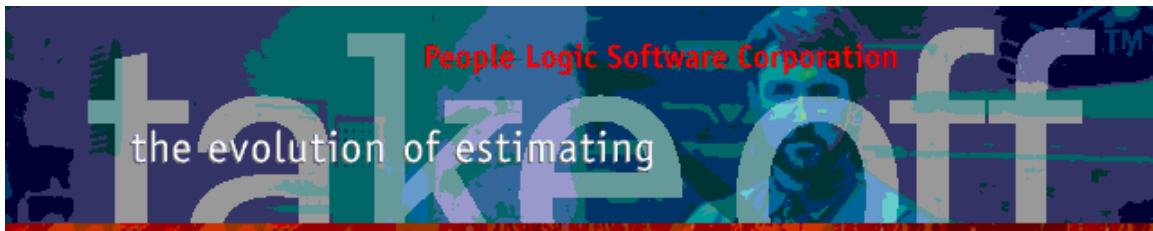
Hilite colors may be named to form legend.



Save Line properties

All line properties may be saved as a single name for future recall. *AsHilte* has been extended to include background.





Takeoff

Edit Item

Labor or materials may be viewed using UOM2

Library	NET Qty	UOM	Description	Cost
Engineering	0.09	Hours	Detailing	\$1.88
	0.02	Hours	Site visiting	\$0.38
Manufacturing	0.33	Hours	Assemble case	\$6.63
	0.40	Hours	Attach hardware	\$8.00
	0.03	Hours	Toggle UOM	\$0.52
	0.09	Hours	Toggle UOM	\$1.76
	0.05	Hours	End bore	\$1.05

General	Options	Costs	Sell	Tracker
<input checked="" type="radio"/> Material [\$63.08] <input type="radio"/> Labor [\$42.59 (1.6+0.6)] <input type="radio"/> Extra [\$0.00]				
Interior	+	Finish	+	Hardware
Cab-w/htMel		Cab-Plam		Standard-Hardware
Library	Net Quantity	UOM	Description	Cost
Edging	13.33	Linft	0.5mm x 24mm PVC White	\$0.67
	12.67	Linft	0.5mm x 24mm PVC1	\$1.52
Hardware	16.00	Each	8mm Beech Dowell	\$0.16
	4.00	Each	Gross Qty = 4.0 Each @ 1.27 ea.	\$5.08
	4.00	Each	Toggle UOM	\$1.84
	2.00	Each		\$17.00

Filter

Item filter has been replaced to better allow multiple filter conditions.

Filter setup

Select the records by the next conditions:

	Field	Condition	Value
AND	Category	equal	150 Base

Define the additional condition:

☒ AND
 ☐ OR

Field

Phase

Condition

equal

Value by text

Value by list

Phase 1

Clear

Add to list

Save in list

Delete from list

OK

Cancel

