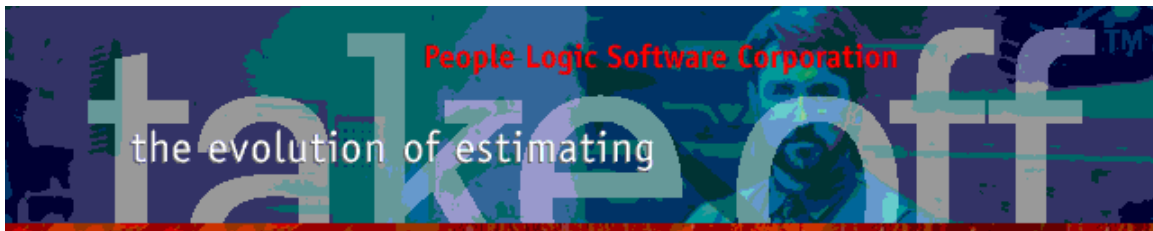


## Update Bulletin 2.8.0.3

Hello

Many updates of the past year have been requested by various users and have finally made their way to your runtime version. Brief summaries of the highlights are shown below.

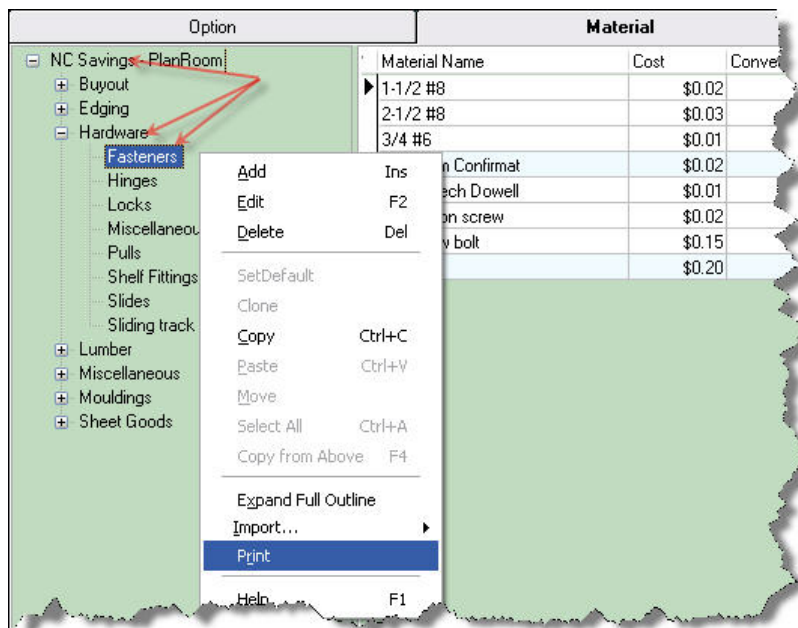
Admin.....	2
Material Print .....	2
Groups .....	3
Takeoff.....	3
Delete Location .....	3
Catalog .....	4
ItemPrint.....	4
Contact .....	5
ClientPrint.....	5
Report Viewer .....	5
Export.....	5
Status .....	6
RPT location.....	6
Reports .....	7
Add Item_Sum4.....	7
Add Spec2.....	8
plExport.....	9
Levels .....	9
tkOffice.....	9
Word Scope.....	9
Screenshots .....	9

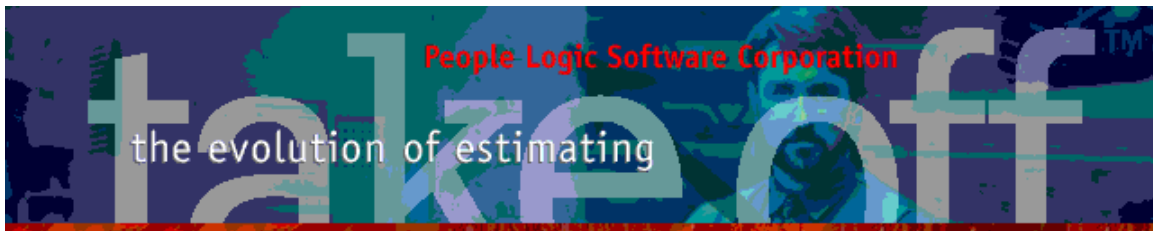


## Admin

### ***Material Print***

RightClick Print will filter report preview on selected node. Thus only show Fasteners, all Hardware or everything.





## Groups

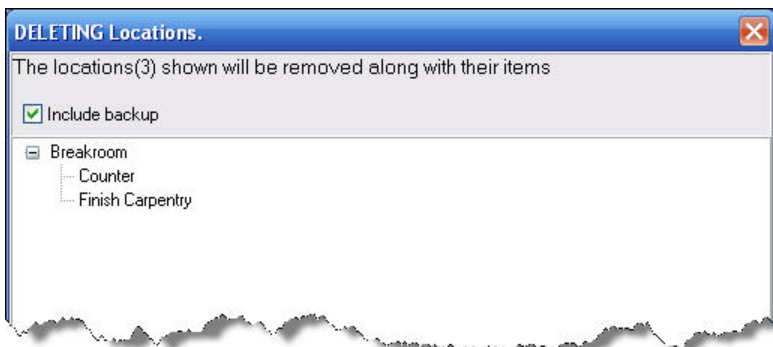
A material Path column has been added to show where the material is situated in your material database. Sometimes materials are duplicated and this will show which one you are referring to.

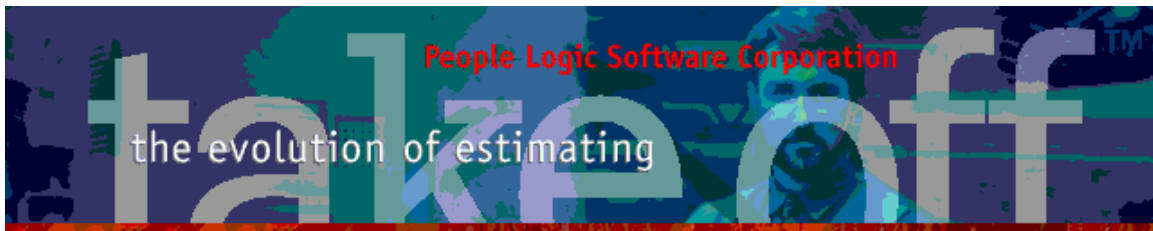
Option	Material	Labor	Groups		
Item	Material Assigned	Cost	UOM	Path	
2x6	Alder 2x6	\$4.15	Linft	Lumber\S4S 6/6	
Back	Alder 1/2 in. G1S	\$1.70	Sqft	Sheet Goods\Plywood	
Carcass G1S	Alder 3/4 in. G2S	\$1.75	Sqft	Sheet Goods\Plywood	
Divider Hard Bd	Hardboard 1/4	\$0.15	Sqft	Sheet Goods\Particle Board	
Edging case	0.5mm x 24mm PVC Woodgrain	\$0.12	Linft	Edging\PVC	
Edging lip	19mm x 38mm Solid Birch	\$0.85	Linft	Edging\Wood	
Edging wide	0.5mm x 33mm PVC Woodgrain	\$0.55	Linft	Edging\PVC	
Interior sealer	TR-Seal Coat	\$0.15	Sqft	Miscellaneous\Laquers	
Interior stain	TR-0 Synthetic Penetrating Oil	\$0.20	Sqft	Miscellaneous\Laquers	
Interior topcoat	TR-1/DP-1 Standard Lacquer	\$0.30	Sqft	Miscellaneous\Laquers	
Pegboard	Pegboard 1/4	\$0.40	Sqft	Sheet Goods\Particle Board	
Shell G2S	Alder 3/4 in. G2S	\$1.75	Sqft	Sheet Goods\Plywood	
Shell G2S auto thickness	Alder 1 in. G2S	\$2.25	Sqft	Sheet Goods\Plywood	
Spreader	Sheathing plywood 3/4	\$0.78	Sqft	Sheet Goods\Plywood	
Wall top/bottom	Alder 3/4 in. G2S	\$1.75	Sqft	Sheet Goods\Plywood	
Wooden frame	Alder 1x2	\$0.60	Linft	Lumber\S4S 4/4	
Wooden guide	Alder 1x1	\$0.35	Linft	Lumber\S4S 4/4	

## Takeoff

### Delete Location

Backups while deleting locations is optional. By default backup will be checked is sub locations exist.

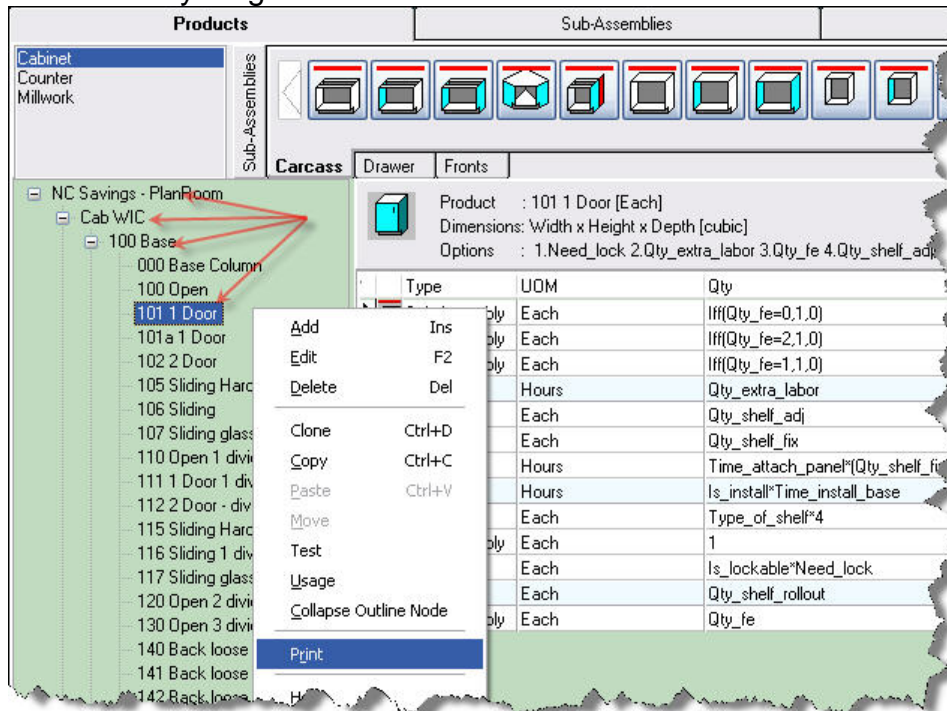


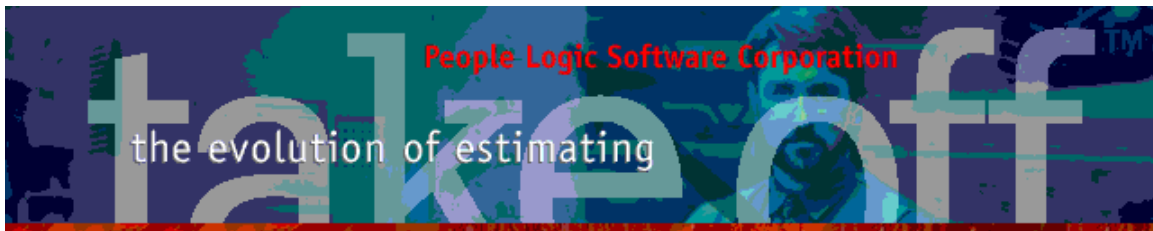


## Catalog

### ItemPrint

RightClick Print for Product/Sub-assembly/Part/Component will filter report preview on selected node. Thus only show 101 1 Door, all 100 Base, all Cab WIC or everything.





## Contact

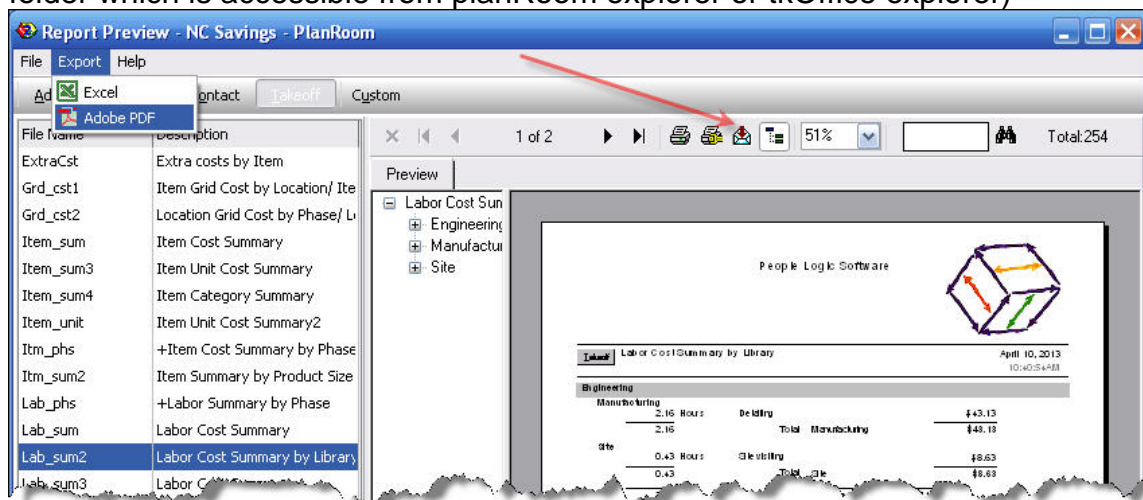
### ***ClientPrint***

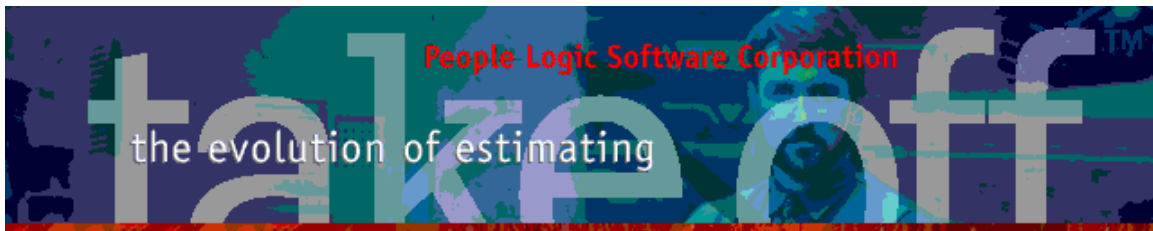
RightClick Print for will filter report on selected TAB

## Report Viewer

### ***Export***

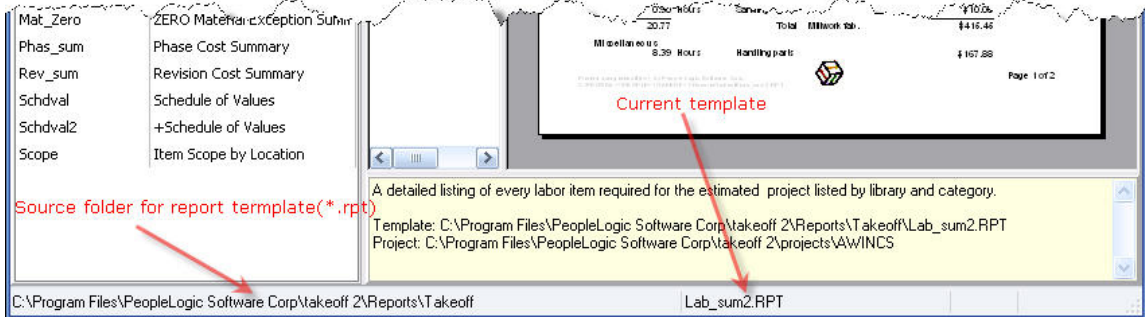
Due to the built in Crystal export tool resetting itself after each export, a couple of menu items were added to overcome this. These specific exports for Excel/PDF will remember their export path during each takeoff session(Default to project folder which is accessible from planRoom explorer or tkOffice explorer)





## Status

A status bar has been added to show source of current template. Comment window has been expanded and moved below to include prompts, template and project folder.

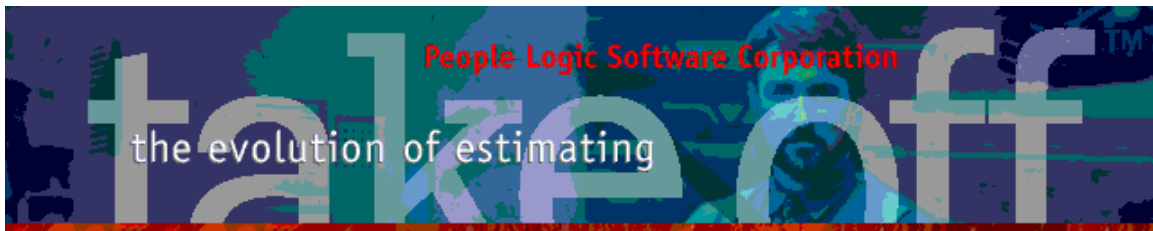


## RPT location

This is purely technical but the report templates were never properly updated when projects resided on a non-installed location. The following changes were made to solve this.

1. Standard installed report for sections Admin, Catalog, Contact and Takeoff will be opened from your takeoff install location(not your data path). Thus updates don't need to be propagated to server.
2. User reports will remain on your private datapath {datapath\Reports\User} to ensure a single point update for your personal templates. Those switching their datapath from Server to local C:\ will need to ensure that local User templates are current.

Summary - \Reports\User always resides on your datapath, all other remain local and managed by updates



## Reports

### Add Item\_Sum4

Summarize all takeoff items by library and category.

Takeoff

Item Category Summary

April 9, 2013

7:17:57PM

Cab WIC


Qty UOM1	Qty UOM2	Item	MatCost1	MatCost2	LabCost1	LabCost2	LabQty1	LabQty2	TotalCost
100 Base									
2.0 Each	5.0 Linft.	000 Base Column	\$263.34	\$0.00	\$114.78	\$30.00	5.74	1.50	\$408.13
1.0 Each	2.0 Linft.	101a 1 Door	\$132.54	\$0.00	\$77.32	\$15.00	3.87	0.75	\$224.86
			\$395.89	\$0.00	\$192.10	\$45.00	9.61	2.25	\$632.99
150 Base									
1.0 Each	3.0 Linft.	152 Sink 2 Door	\$70.23	\$0.00	\$34.52	\$30.00	1.73	1.50	\$134.75
			\$70.23	\$0.00	\$34.52	\$30.00	1.73	1.50	\$134.75
200 Drawer									
3.0 Each	8.0 Linft.	222 1 Dbl drw 2 door	\$572.77	\$0.00	\$307.42	\$45.00	15.37	2.25	\$925.19
			\$572.77	\$0.00	\$307.42	\$45.00	15.37	2.25	\$925.19
300 Wall									
1.0 Each	3.0 Linft.	000 Upper Column	\$73.00	\$0.00	\$39.43	\$11.25	1.97	0.56	\$123.68
5.0 Each	12.0 Linft.	302 2 Door	\$410.77	\$0.00	\$206.58	\$56.25	10.33	2.81	\$673.59
			\$483.77	\$0.00	\$246.00	\$67.50	12.30	3.38	\$797.27
Options1									
2.0 Each	2.0 Each	Filler panel	\$16.91	\$0.00	\$4.50	\$7.50	0.22	0.38	\$28.91
2.0 Each	2.0 Each	Filler wall	\$21.81	\$0.00	\$5.66	\$15.00	0.28	0.75	\$42.47
			\$38.72	\$0.00	\$10.16	\$22.50	0.51	1.13	\$71.38
Options2									
1.0 Each	5.0 Linft.	Shelf & bracket set	\$52.10	\$0.00	\$8.70	\$34.80	0.43	1.74	\$95.60
			\$52.10	\$0.00	\$8.70	\$34.80	0.43	1.74	\$95.60
			\$1,613.48	\$0.00	\$798.90	\$244.80	39.95	12.24	\$2,657.18

Counter

Qty UOM1	Qty UOM2	Item	MatCost1	MatCost2	LabCost1	LabCost2	LabQty1	LabQty2	TotalCost
----------	----------	------	----------	----------	----------	----------	---------	---------	-----------

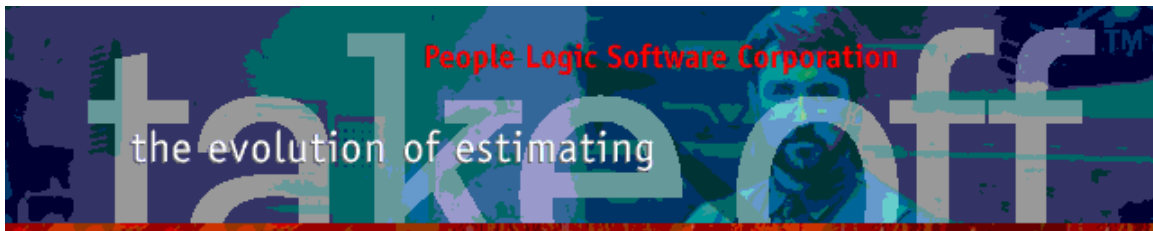
Printed using takeoff(tm) by People Logic Software Corp.

C:\PROGRA~1\PEOPLE~1\TAKEOF~1\Reports\Takeoff\ITEM\_S-2.RPT



Page 1 of 2



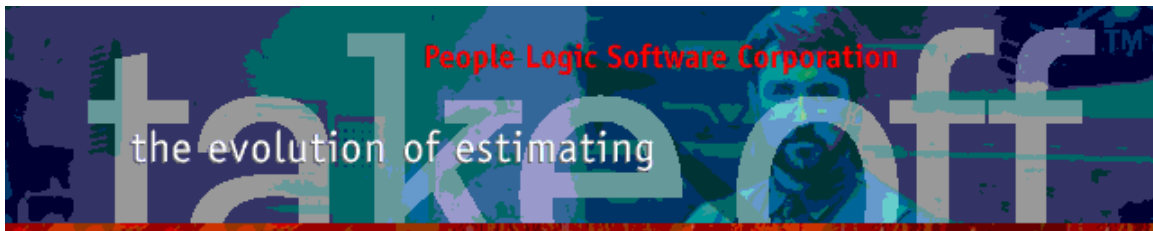


## Add Spec2

Summarize each individual spec in use.

Takeoff	Material Group Specification	April 9, 2013 7:13:05PM
<b>Cab-Birch-Cab-Beech-Default(H)</b>		
<b>Edging</b>		
<b>PVC</b>		
15/16 x .018 PVC Birch		
15/16 x 1/8 PVC Birch		
<b>Hardware</b>		
<b>Fasteners</b>		
8mm Beech Dowell		
<b>Locks</b>		
Kenstin cabinet lock		
<b>Pulls</b>		
Chrome 4 inch wire D pull		
<b>Slides</b>		
Blum bs230 20		
Blum Meta filer		
<b>Sheet Goods</b>		
<b>Plywood</b>		
1/2 Baltic beech		
1/2 Birch G1S		
3/4 Birch G1S		
3/4 Birch G2S (Door grade)		
3/4 Sheathing		





## plExport

### Levels

Location nodes have been parsed by level, up to 12 levels deep.

plExport - [C:] NC Savings - PlanRoom

File Edit Help

Templates Filter Wizard About

Takeoff: Items Filter: None [34 records]

MILE6	MILE7	MILE8	LEVEL1	LEVEL2	LEVEL3	LEVEL4
0	0	0	Office 1	Counter		
0	0	0	Office 1	Counter		
0	0	0	Office 1	Counter		
0	0	0	Office 1	Counter		
0	0	0	Office 1	Counter		
0	0	0	Office 1	Counter		
0	0	0	Office 1	Counter		
0	0	0	Office 1	Counter		
0	0	0	Office 1	Counter		
0	0	0	Office 1	Counter		
0	0	0	Office 1	Counter		
0	0	0	Office 1	Finish Carpentry		
0	0	0	Office 1	Finish Carpentry		

## tkOffice

### Word Scope

Italics to scope section may be disabled.

### Screenshots

Screenshots of active forms are possible with two keys:

F9 - Send image file to desktop.

F10 - Send to Windows clipboard.

Help|Email support will now use this to automatically attach a screen shot to you support email.

Any comments are welcome for future enhancements.

Thank you for all your ideas.

People Logic Software