

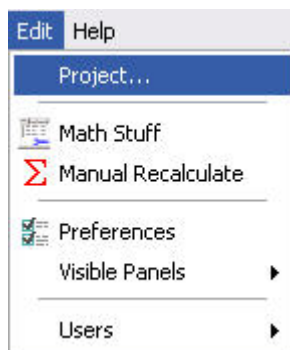
## Update Bulletin 2.2.1.28

Hello

Portions of the current update have been requested by various users and have finally made their way to the runtime version. Since many features are packed together a special bulletin beyond the standard "What's New" text has been provided.

Edit Project .....	2
File Open .....	3
Group names.....	3
Edit Takeoff Item1 .....	4
Edit Takeoff Item2 .....	4

## Edit|Project

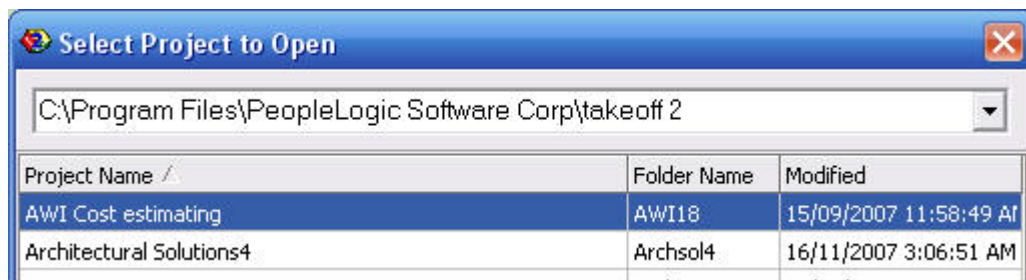
A screenshot of the 'Project settings' dialog box. The title bar says 'Project settings' with a close button. Below the title bar, it says 'Current bid = \$260.36'. There are six tabs: 'General', 'Defaults' (which is selected), 'Bid Lists', 'Sub Contracts', 'Allowances', and 'Bid Results'. The 'Defaults' tab contains three sections: 'Default Selections for new Data Entry' with 'myPhase' set to 'P2' and 'myRevision' set to 'R123'; 'Groups' with 'Interior' set to 'Cab-Birch', 'Finish' set to 'Cab-Birch', and 'Hardware' set to 'Default(H)'; and 'Labor rate defaults' with 'Labor direct' and 'Labor indirect' both set to '20.00'. Each labor rate has a 'Reset all' button next to it. At the bottom of the dialog are 'Print', 'Ok', and 'Cancel' buttons.

A new page similar to that of Edit|Preferences has been placed here. The original page has been deleted. Thus all project editing will be done here and Edit|Pref will only be used for technical settings.

A new item is to allow mass editing of ALL labor rates from one location. Initially the edit boxes will show an average rate currently used. Both types of labor may be edited here

**WARNING** – this will modify the rates for ALL labor items.

## File|Open

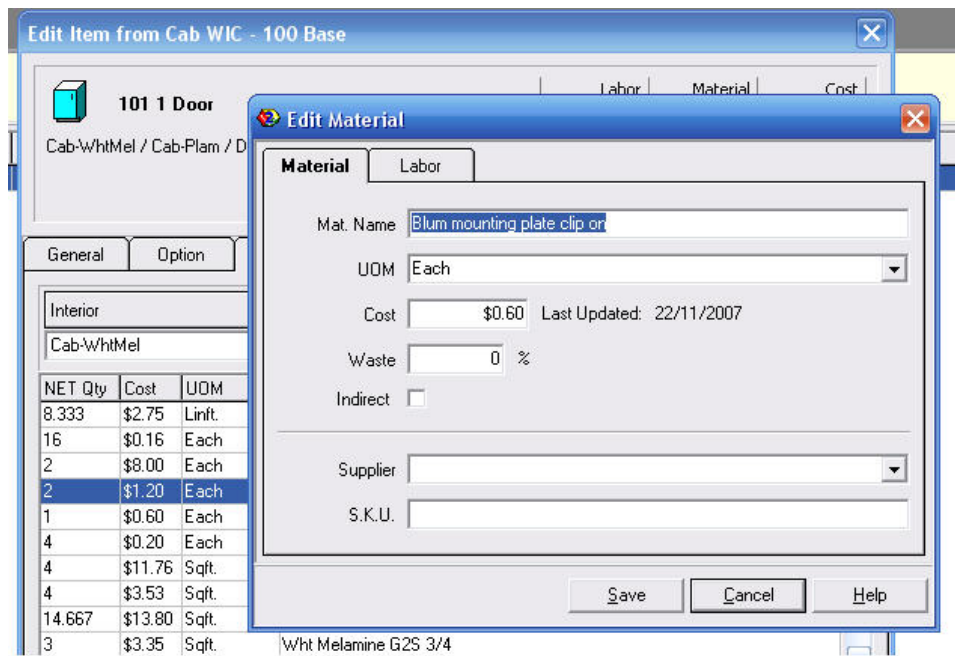


File|Open will now register all projects paths set in Edit|Preferences and provide them at the open menu. This is only useful for those storing projects in multiple locations.

## Group names



Expanded to 20 characters.

**Edit|Takeoff|Item1**

Double click for material edit

Double clicking in the material grid will allow direct access to the material edit dialog.  
Note – the material changes are still global to your project.

**Edit|Takeoff|Item2**

NET Qty	Cost	UOM	Description
8.333	\$2.75	Linft.	3.0mm x 24mm PVC1
16	\$0.16	Each	8mm Beech Dowell
2	\$8.00	Each	Blum 125 deg clip on
2	\$1.20	Each	Blum mounting plate clip on
1	\$0.60	Each	D Pull 4 inch CHR wire
4	\$0.20	Each	Adj Shelf Clip Plastic
4	\$11.76	Sqft.	PL 125 1/2 x 5 1/2
4	\$3.53	Sqft.	Wht Melamine G1S 3/4
14.667	\$13.80	Sqft.	Wht Melamine G2S 3/4
3	\$3.35	Sqft.	Wht Melamine G2S 3/4

Right click = Gross qty + waste

Gross Qty = 4.7 Sqft. @ 2.50 ea. [15 % waste]

Right clicking in the material grid will show a pop up with Gross quantity and waste.

Any comments are welcome for future enhancements.

Thank you

People Logic Software