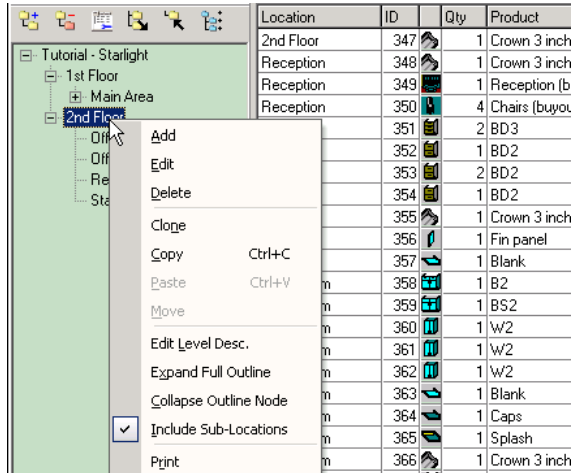
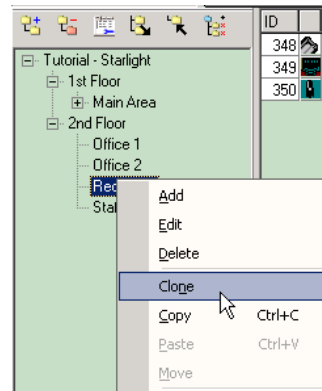




Takeoff 2.1 has been enhanced with many new features!

Takeoff

You can now **clone** (copy) a location and all its sub-locations, and all takeoff items within, with a single click!



Select View Scope: When viewing a location that has sub-locations, you can now optionally include the items in the sub-locations in the takeoff view for that location.

We have completely re-written the **Takeoff item editor** to be easier to use, more informative, more powerful, and to add support for our new **Extra costs** feature.

The Extra Costs feature allows you to associate additional costs on a one-time basis to line items that require them. Any number of material or labor items can be added to a product.

Qty	UOM	Descr	Cost
43	Sqft.	6mm clear glass	\$193.50
62	Linft.	Oak 5522 1 1/16 Panel Mo	\$86.80
210	Minutes	Assembly	\$63.00

Takeoff Summary

Summary pages (Material, Labor) now feature a distinction between regular costs and **Indirect** costs - which could be site, installation, sub-contract or any other kind of cost you would prefer to count separately.

Qty = 709.8 (438.5 + 271.3 Indirect)
Cost = \$303.35 (\$143.10 + \$160.25 Indirect)

Qty	UOM	Name	Cost	Indirect
64.5	Minutes	Cutting	\$32.25	x
0.833	Hours	General Installation	\$25.00	x
50	Minutes	Install Accessories	\$25.00	x
150	Minutes	Install cabinets	\$75.00	x
6	Minutes	Install top	\$3.00	x
64.5	Minutes	Handling	\$19.35	
310	Minutes	Assembly	\$93.00	
37.5	Minutes	Edge banding	\$15.00	
24	Minutes	Machining	\$12.00	
2.5	Minutes	Molding Labor	\$3.75	

- Indirect costs are shown separately and can have different markups applied to them.

Project

A new project editor brings your takeoff a step closer to the final bid by letting you bring together contractors, bid lists, allowances and even competing bids! Easy slider controls make "what if" markup and margin scenarios a breeze.

Project settings

General

Bid Lists

Sub Contracts

Allowances

Bid Results

	Cost	Markup		Total	
Material	\$12,125.42		+0 %	\$12,125.42	65.4 %
+ indirect	\$1.00		+0 %	\$1.00	0.0 %
Labor	\$2,232.55		+139 %	\$5,335.79	28.8 %
+ indirect	\$1,078.00		+0 %	\$1,078.00	5.8 %
Profit	\$18,540.21		+0 %	\$0.00	0.0 %
Buyouts	\$0.00		+0 %	\$0.00	0.0 %
Allowances				\$0.00	0.0 %
				\$18,540.21	

▼ Copy Down

Bid Status

Pending

Contractor

Pending

Sub

Bid Amount

\$0.00

Print

Ok

Cancel

Project settings

General

Bid Lists

Sub Contracts

Allowances

Bid Results

Name

Tutorial

Closing date

2006/02/16

Title

Tutorial - Starlight

Closing time

1800

Estimator

Gerald

Revision 1

1

Contact1

Interior Space Planners Inc.

Quality grade

Contact2

Richard Stack Inc

Start date

2005/10/17

Contact3

Duration (days)

0

Contact4

Bid Scope

Print

Ok

Cancel

3 Items in Location

!

Closing TODAY at 18:00

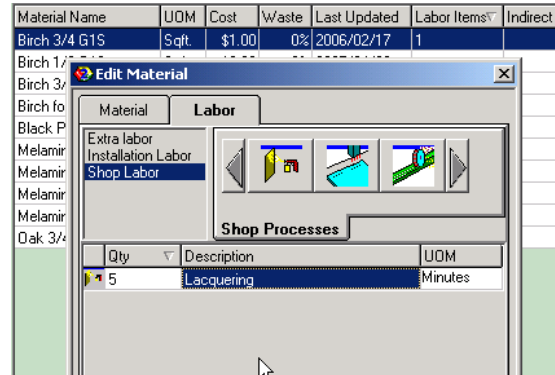
Our Closing Date feature keeps a reminder of when the project closes visible at all times so you don't miss deadlines!

!

Closing TODAY at 18:00

Admin

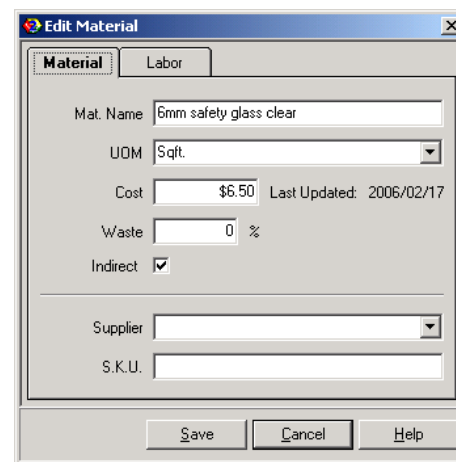
In **Materials Admin**, a new column now shows whether a material item has associated labor costs. For example, in this picture our *Birch 3/4 G1S* material includes a labor step to apply lacquer. The number of Labor items associated with that material (in this case 1) shows in the **Labor Items** column.



You can now designate selected Materials as **Indirect costs** so that they can be counted separately in the summaries and in reports.

Qty	UOM	Name	Cost	Indirect
1	Each	Extra Material	\$1.00	x
367.5	Linft.	.5 mm PVC edging	\$36.75	
1100	Linft.	3 inch Maple Crown	\$1,925.00	
26	Linft.	3 mm PVC edging	\$7.80	

- See the **Takeoff Summary** feature description for more information

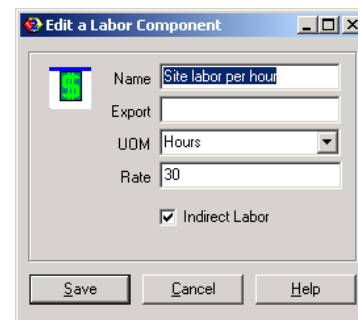


- ALSO: New multi-item select, copy, paste, and delete features make working in Admin much smoother

Catalog

You can now designate selected Labor items as **Indirect costs** so that they can be counted separately in the summaries and in reports.

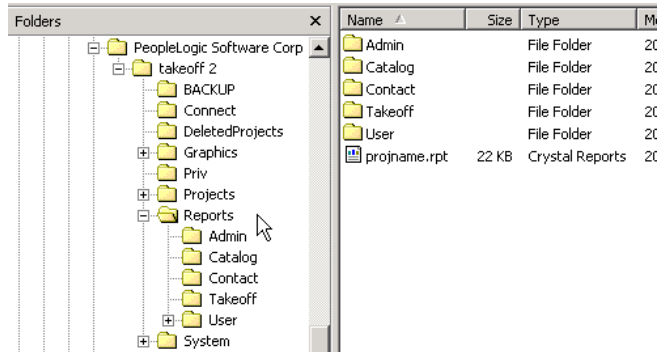
Qty	UOM	Name	Cost	Indirect
1	Each	Extra Material	\$1.00	x
367.5	Linft.	.5 mm PVC edging	\$36.75	
1100	Linft.	3 inch Maple Crown	\$1,925.00	
26	Linft.	3 mm PVC edging	\$7.80	
31	Sqft.	38mm Birch Veneer ...	\$496.00	
84	Each	96 mm wire D pull	\$50.40	
4	Each	Beech/leather chair	\$1,060.00	
1	Each	Beech/stainless cu...	\$4,500.00	
1	Each	Bevel edge cap	\$10.00	
107	Sqft.	Birch 1/2 G1S	\$96.30	
282	Sqft.	Birch 3/4 G1S	\$282.00	
44	Sqft.	Birch 3/4 G2S	\$55.00	
6	Each	Blum 125 deg clip on	\$13.50	
16	Pair	Blum bs230 16	\$40.00	
26	Pair	Blum bs230 22	\$84.50	
6	Each	Blum mounting plate...	\$3.60	
Cost = \$12,126.42 (\$12,125.42 + \$1.00 Indirect)				



- See the **Takeoff Summary** feature description for more information

Exports and Reports

Report templates are now stored outside of the project space, so that they can be more easily re-used between projects and so that changes to report templates affect all projects.



- Labor breakout quantities are now included in the Excel output.
- We added a "Print Setup" button to the Reports previewer, so that you can change printers and printer properties before printing.

Support

- Email-A-Project feature added
- Version Rollback feature added
- Email takeoff Support feature added
- Backup and Revert improvements include new "Backup to Desktop" option
- Takeoff now automatically updates your project files when we add new features that affect the structure of those files. This makes updating your takeoff program file much easier! Since this happens behind the scenes, you won't even notice it happening!

Performance Improvements

- In large projects, the location outline now builds about twice as fast as it used to
- Opening projects is now faster
- Making and reverting backups is now faster
- Navigating the Location outline is now faster
- Network performance has improved greatly